

PROPERTY HIGHLIGHTS

- Located in Downtown Fremont
- Two Blocks from Fremont BART
- On-site Management
- Comcast High-Speed Internet Service
- Close Proximity to:
 - The Fremont BART Station
 - Lake Elizabeth Central Park
 - Washington Hospital
 - City Hall
- New Lobby, Restrooms, Elevators and Signage

CURRENT AVAILABILITIES

- **Suite 290** | 2nd Floor | ±1,663 SF
- **Suite 330** | 3rd Floor | ±3,048 SF
- **Suite 370** | 3rd Floor | ±1,888 SF
- **Suite 380** | 3rd Floor | ±1,656 SF

LEASE RATE

- \$2.35 / SF Full Service

39510 Paseo Padre Parkway

Fremont, California



**Newmark
Cornish & Carey**

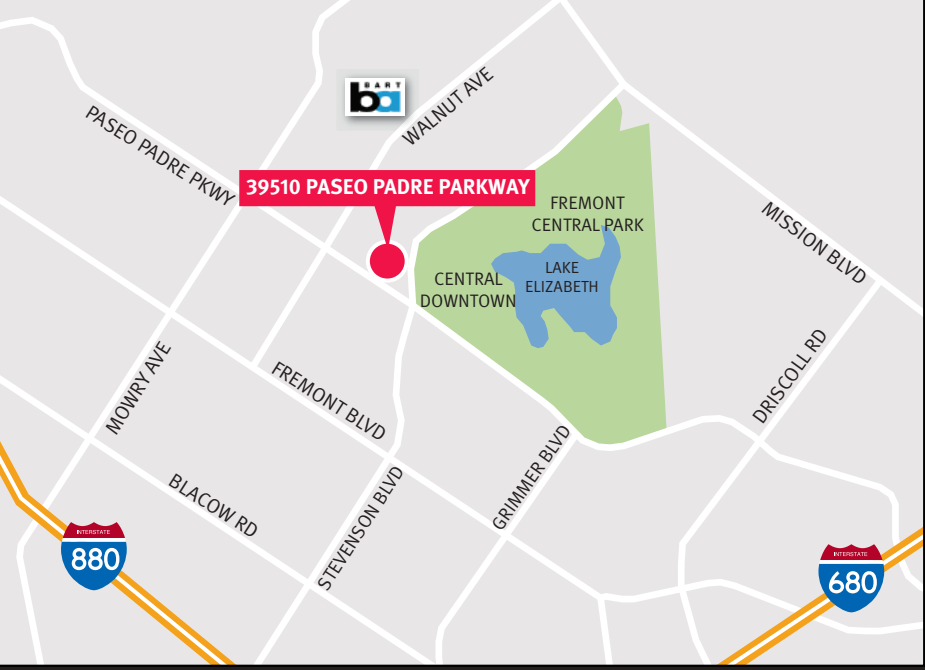
FOR MORE INFORMATION

MIKE SPIRO | Senior Managing Director

mspiرو@newmarkccarey.com | 510.300.0212 | CA RE License# 01433395

26252 Eden Landing Road, Hayward, CA 94545 | T 510.300.0200 F 510.300.0201 www.newmarkccarey.com

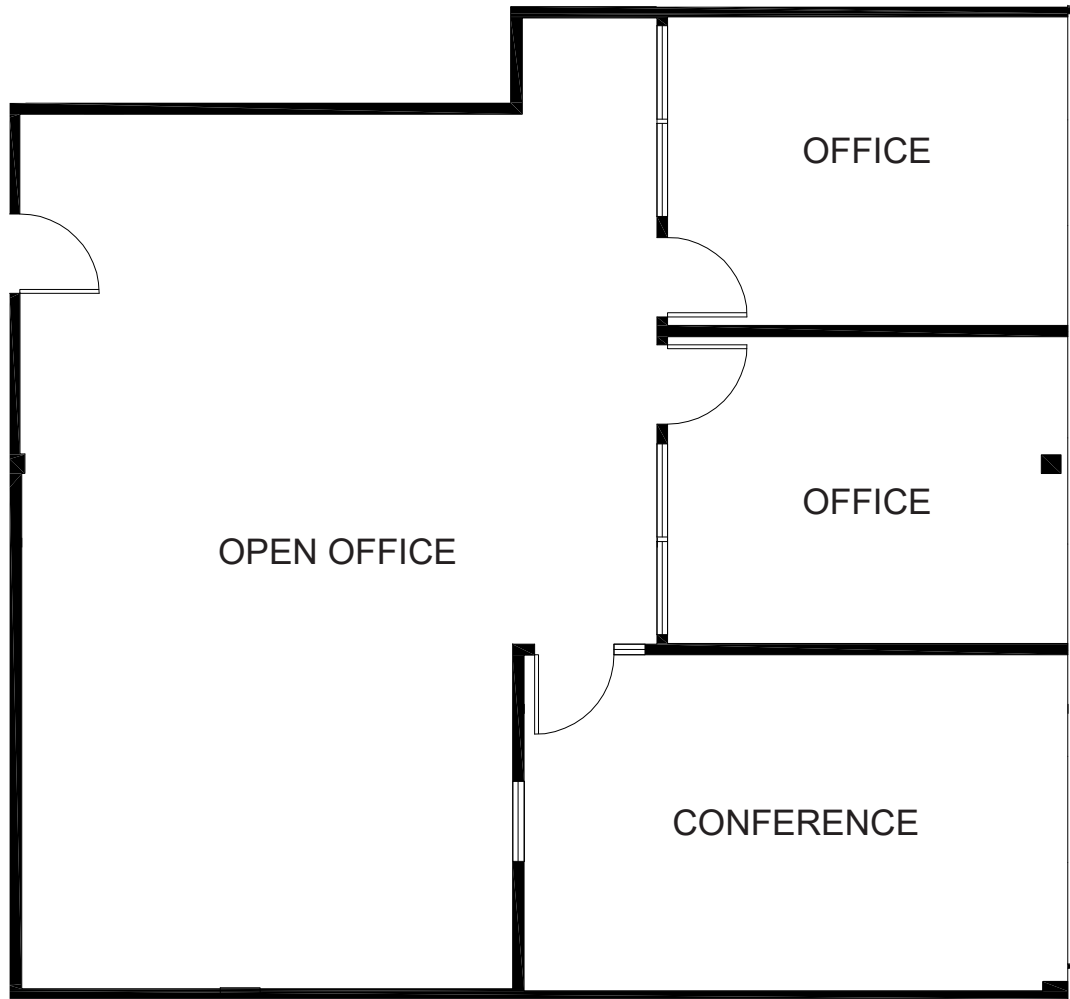
Procuring broker shall only be entitled to a commission, calculated in accordance with the rates approved by our principal only if such procuring broker executes a brokerage agreement acceptable to us and our principal and the conditions as set forth in the brokerage agreement are fully and unconditionally satisfied. Although all information furnished regarding property for sale, rental, or financing is from sources deemed reliable, such information has not been verified and no express representation is made nor is any to be implied as to the accuracy thereof and it is submitted subject to errors, omissions, change of price, rental or other conditions, prior sale, lease or financing, or withdrawal without notice and to any special conditions imposed by our principal.



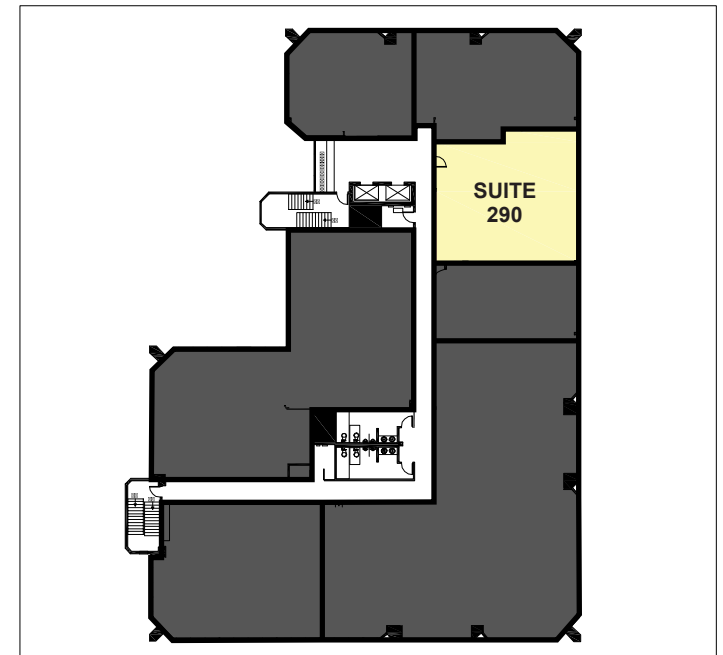
**Newmark
Cornish & Carey**

FOR MORE INFORMATION **MIKE SPIRO** | Senior Managing Director
mspiro@newmarkccarey.com | 510.300.0212 | CA RE License# 01433395
26252 Eden Landing Road, Hayward, CA 94545 | T 510.300.0200 F 510.300.0201 www.newmarkccarey.com

SUITE 290 | SECOND FLOOR

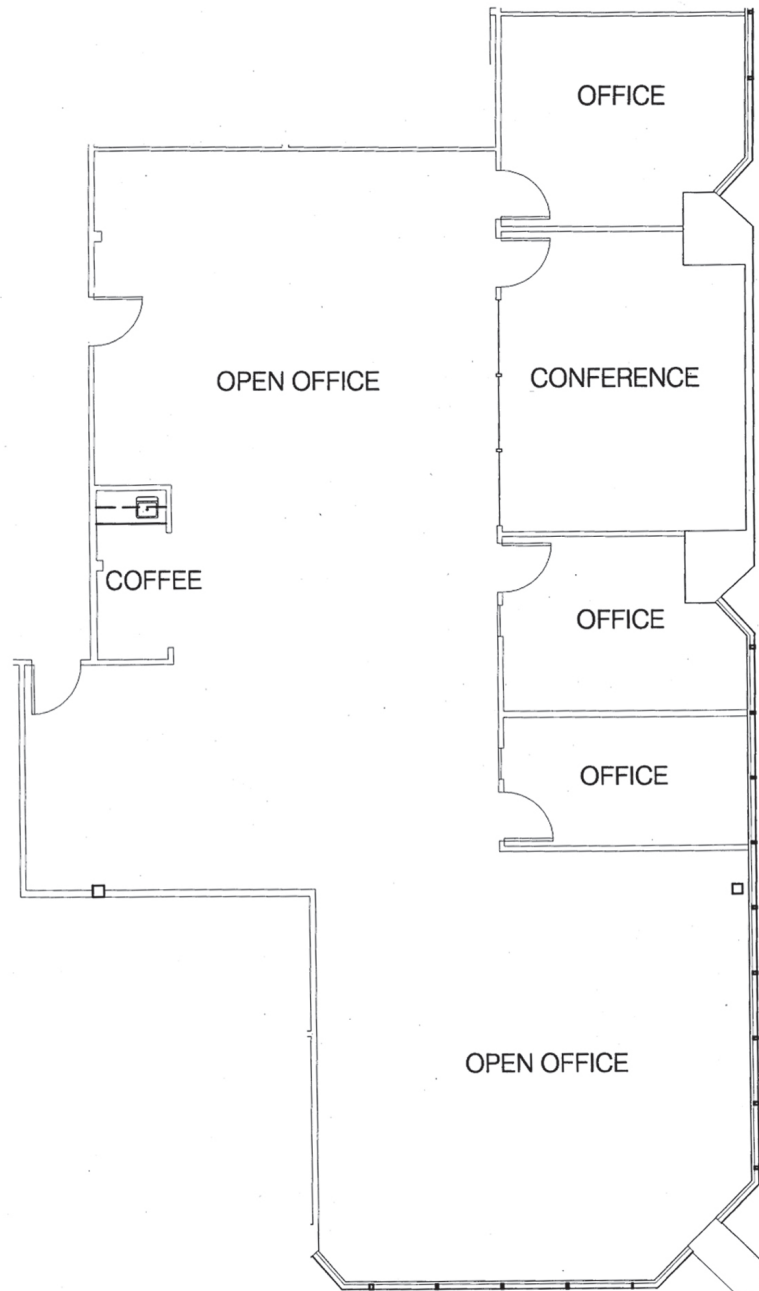


- ±1,663 Rentable Square Feet
- Available Now
- Two (2) Private Offices
- One (1) Large Conference Room
- **Rental Rate: \$2.35/SF Full Service**

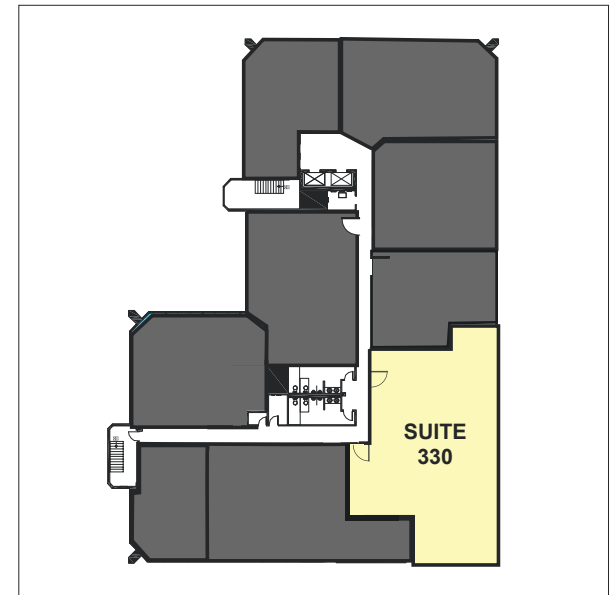


Note: Floor plan not to scale.

SUITE 330 | THIRD FLOOR



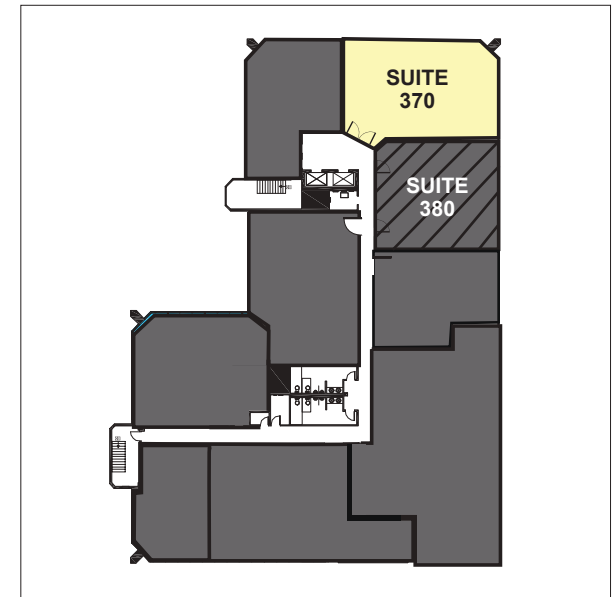
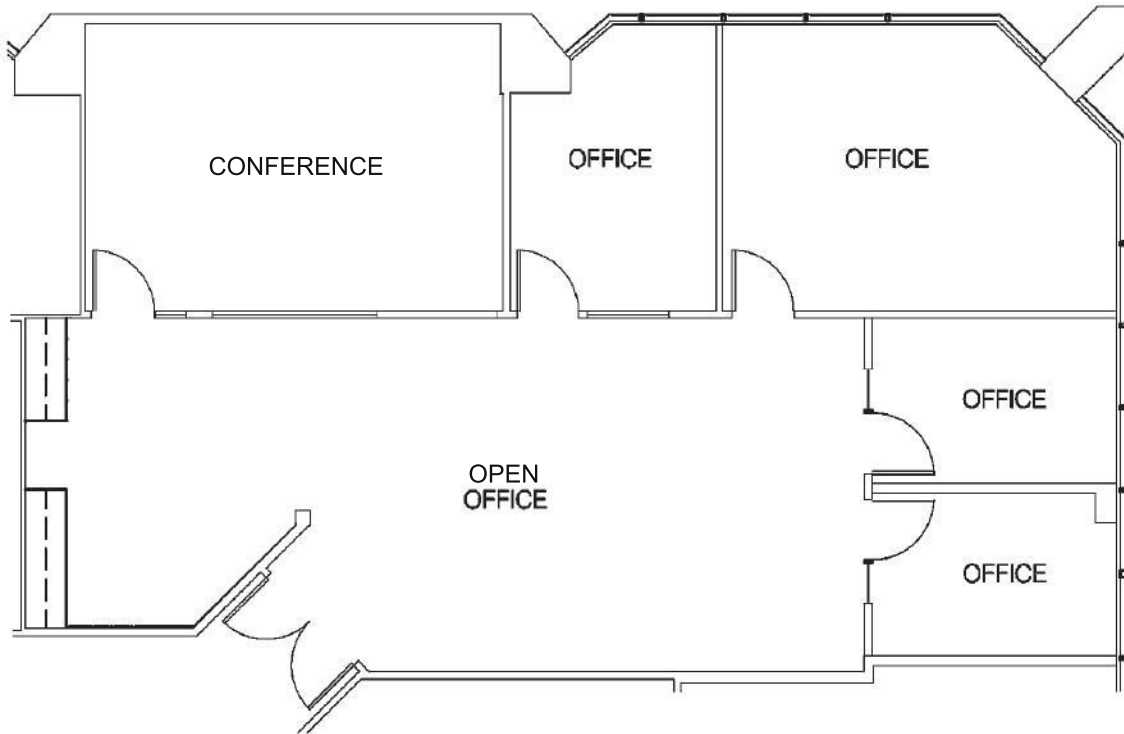
- ±3,048 Rentable Square Feet
- Available Now
- Three (3) Private Offices
- One (1) Large Conference Room
- Sink & Coffee Bar in Suite
- Lots of Natural Light
- **Rental Rate: \$2.35/SF Full Service**



Note: Floor plan not to scale.

SUITE 370 | THIRD FLOOR

- ±1,888 Rentable Square Feet
- Can be Combined with Suite 380 for a Total of ±3,544 SF
- Available Now
- Four (4) Private Offices
- One (1) Large Conference Room
- Dry Pantry in Suite
- Corner Suite, Lots of Natural Light
- **Rental Rate: \$2.35/SF Full Service**



Note: Floor plan not to scale.

